



## QY50D521

### Driver's cab

- Double door of the driver's cab, which has registered in national patent technology, is convenient for users getting on and off the crane.
- Adjustable shockproof seat, anti-ultraviolet radiation curtain and radio.
- High tightness, waterproof and sound elimination

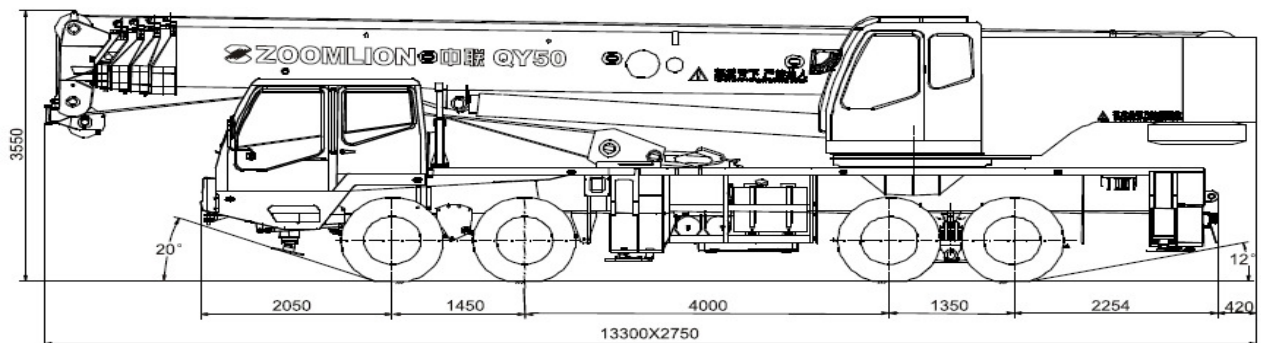
### Operator's cab

- Capacious space, wide vision, high tightness, waterproof and sound elimination
- Large screen LCD and shockproof pressure gauge can display lifting working condition and working pressure at all times.
- Equipped with heater and A/C,

## Main technical parameters

Note: The parameters in the brackets are applicable to the working conditions with outrigger beams half extended.

Working performance parameters	Max. rated total lifting capacity	kg	55000
	Max. Load moment of basic boom	kN.m	1764 (1470)
	Max. Load moment of full extensional boom	kN.m	940.8 (793.8)
	Max. lifting height of boom	m	42.1
	Max. lifting height of jib	m	58.3
Working speed	Max. speed of single rope on auxiliary winch	m/min	72
	Max. speed of single rope on main winch	m/min	130
	Derricking time of boom	s	50
	Telescopic time of boom	s	95
	Slewing speed	r/min	0~2
Traveling parameters	Max. transport speed	km/h	76
	Max. Gradeability	%	32
	Min. turning radius	m	≤12
	Min. ground clearance	mm	260
	Emission standard for smoke at free acceleration		National II
Weight parameters	Oil consumption per hundred kilometers	L	40
	Deadweight of crane in traveling condition	kg	40400
	Complete vehicle kerb mass	kg	40270
	Load of front axle	kg	14900
	Load of intermediate and rear axle	kg	25500
Dimensions parameters	Outline dimensions(L x W x H)	mm	13300 x 2750 x 3550
	Base on outriggers	m	5.92
	Distance between outriggers	m	6.90(4.7)
	Boom length	m	11.1~42.0
	Boom angle	°	-2~80
Chassis	Model		ZLJ5400
	Engine model		WD615.44
	Rated power of engine	kw/r/min	243/2200
	Max. output torque of engine	N.m/r/min	1250/1400~1600



# Load rating chart

Note: the load ratings of QY50V522, QY50H521 and QY50D521 are the same.

Unit: kg

working radius (m)	Boom(M)							Boom angle (°)	Boom+jib				
	Operate in side and rear working area with cylinder I and outriggers full extended								42.0+9.5		42.0+16.0		
	11.1	15.0	18.8	24.6	30.4	36.2	42.0		0°	30°	0°	30°	
3.0	55000	40000	32000					80	4500	2150	2800	1000	
3.5	50500	40000	32000					78	4500	2050	2600	1000	
4.0	44500	40000	32000	24000				76	4200	1950	2300	1000	
4.5	40000	36000	31000	23000				74	3800	1900	2000	1000	
5.0	36000	33000	29000	21800	16000			72	3500	1850	1800	1000	
5.5	32000	30000	27300	20600	16000	12400		70	3200	1800	1650	1000	
6.0	29000	27500	25700	19500	16000	12400		68	3000	1750	1550	900	
6.5	26000	25500	24200	18500	15500	12400		66	2700	1700	1450	850	
7.0	24000	23500	23000	17500	14600	12400	9000	64	2300	1650	1350	800	
7.5	22300	21900	21500	16600	14000	12400	9000	62	2000	1600	1250	750	
8.0	20300	19700	19400	15800	13300	11800	9000	60	1700	1350	1150	700	
9.0	15800	15300	15000	14300	12200	10900	9000	58	1400	1100	1000	650	
10.0		12200	12000	13000	11200	10000	9000	56	1150	850	850	500	
11.0		9900	9700	10700	10300	9200	8300	54	950	650	650		
12.0		8200	8000	9000	9700	8500	7800	52	750	450			
14.0			5500	6500	7150	7500	6800						
16.0			3800	4800	5400	5750	6000						
18.0				3550	4150	4500	4750						
20.0				2600	3200	3500	3750						
22.0				1850	2400	2750	3000						
24.0					1800	2100	2350						
26.0					1300	1600	1850						
28.0					850	1200	1450						
30.0						850	1050						
32.0							750						
I	0	3.9	7.7	7.7	7.7	7.7	7.7						
II	0	0	0	5.8	11.6	17.4	23.2						
Wire rope falls	12	8	8	6	4	4	3					1	
Hook				55t main hook						4.5t auxiliary hook			

Unit: kg

working radius (m)	Boom(M)												
	Operate in side and rear working area with cylinder I half extended and outriggers full extended						Operate in side and rear working area with outriggers full extended and cylinder I not extended						
	11.1	15.0	20.8	26.6	32.4	38.2	11.1	16.9	22.7	28.5	34.3		
3.0	55000	40000	24000				55000	24000					
3.5	50500	40000	24000				50500	24000	16000				
4.0	44500	40000	24000	16000			44500	24000	16000				
4.5	40000	36000	23000	16000			40000	23000	16000	12400			
5.0	36000	33000	21800	16000			36000	21800	16000	12400			
5.5	32000	30000	20600	16000	12400		32000	20600	16000	12400			
6.0	29000	27500	19500	16000	12400		29000	19500	16000	12400	8500		
6.5	26000	25500	18500	15500	12400	8500	26000	18500	15500	12000	8500		
7.0	24000	23500	17500	14600	12400	8500	24000	17500	14600	11500	8500		
7.5	22300	21900	16600	14000	12400	8500	22300	16600	14000	11000	8500		
8.0	20300	19700	15800	13300	11800	8500	20300	15800	13300	10500	8500		
9.0	15800	15300	14600	12200	10900	8500	15800	14600	12200	9500	8300		
10.0		12200	13400	11200	10000	8500		14100	11200	8600	7600		
11.0		9900	11100	10300	9200	7700		11700	10800	8000	7000		
12.0		8200	9400	9700	8500	7200		9800	10200	7500	6500		
14.0			6700	7400	7500	6200			7900	6400	5600		
16.0			5000	5700	6100	5500			6200	5550	4700		
18.0				4400	4800	4850			4800	4850	4100		
20.0				3300	3700	4000				4200	3600		
22.0				2500	2900	3200				3400	3200		
24.0					2400	2600				2700	2800		
26.0					1900	2100					2300		
28.0						1600					1800		
30.0						1200							
32.0						1000							
I	0	3.9	3.9	3.9	3.9	3.9	0	0	0	0	0		
II	0	0	5.8	11.6	17.4	23.2	0	5.8	11.6	17.4	23.2		
Wire rope falls	12	8	6	4	4	3	12	6	4	4	3		
Hook				55t main hook									

# Load rating chart

Unit : kg

working radius (m)	Boom(M)							Boom angle (°)	Boom+jib					
	Operate in side and rear working area with cylinder I full extended and outriggers half extended								42.0m+9.5m		42.0m+16.0m			
	11.1	15.0	18.8	24.6	30.4	36.2	42.0		0°	30°	0°	30°		
3.0	50000	40000	32000					80	4500	2150	2800	1000		
3.5	44000	40000	32000					78	4500	2050	2600	1000		
4.0	38000	36000	32000	24000				76	4200	1950	2300	1000		
4.5	33000	32000	31000	23000				74	3800	1900	2000	1000		
5.0	27200	26600	26200	21800	16000			72	3000	1850	1800	1000		
5.5	22200	21600	21300	20600	16000			70	2300	1650	1650	1000		
6.0	18500	18000	17700	18900	16000	12400		68	1700	1250	1350	900		
6.5	15700	15200	14900	16100	15500	12400		66	1200	900	900	700		
7.0	13500	13000	12700	13900	14600	12400	9000	64	800	600	600	450		
7.5	11700	11300	11000	12200	12900	12400	9000	62	500					
8.0	10300	9900	9600	10700	11400	11800	9000							
9.0	8000	7700	7400	8500	9100	9500	9000							
10.0		6100	5800	6800	7400	7800	8100							
11.0		4800	4500	5500	6000	6400	6700							
12.0		3800	3500	4500	5000	5400	5700							
14.0			2000	3000	3500	3800	4100							
16.0			1000	1900	2400	2700	3000							
18.0				1100	1600	1900	2200							
20.0					1000	1300	1600							
22.0						800	1100							
24.0							600							
26.0														
28.0														
30.0														
32.0														
I	0	3.9	7.7	7.7	7.7	7.7	7.7							
II	0	0	0	5.8	11.6	17.4	23.2							
Wire rope falls	12	8	8	6	4	4	3					1		
Hook													55t main hook	4.5t auxiliary hook

Unit : kg

working radius (m)	Boom(M)												
	Operate in side and rear working area with cylinder I and outriggers half extended						Operate in side and rear working area with outriggers half extended and cylinder I not extended						
	11.1	15.0	20.8	26.6	32.4	38.2	11.1	16.9	22.7	28.5	34.3		
3.0	50000	40000	24000				50000	24000					
3.5	44000	40000	24000				44000	24000	16000				
4.0	38000	36000	24000	16000			38000	24000	16000				
4.5	33000	32000	23000	16000			33000	23000	16000	12400			
5.0	27200	26600	21800	16000			27200	21800	16000	12400			
5.5	22200	21600	20600	16000	12400		22200	20600	16000	12400			
6.0	18500	18000	19200	16000	12400		18500	19500	16000	12400	8500		
6.5	15700	15200	16600	15500	12400	8500	15700	17500	15500	12000	8500		
7.0	13500	13000	14400	14600	12400	8500	13500	15100	14600	11500	8500		
7.5	11700	11300	12600	13100	12000	8500	11700	13200	13800	11000	8500		
8.0	10300	9900	11200	11900	11500	8500	10300	11800	12400	10400	8500		
9.0	8000	7700	8800	9500	10000	8500	8000	9500	10100	9500	8300		
10.0		6100	7200	7800	8200	8300		7700	8300	8700	7600		
11.0		4800	5900	6500	6900	7200		6400	7000	7350	7100		
12.0		3800	4800	5400	5800	6100		5300	5900	6250	6300		
14.0			3200	3800	4200	4500		3700	4300	4650	4700		
16.0			2100	2700	3100	3400			3200	3550	3600		
18.0				1800	2200	2500			2400	2700	2750		
20.0				1300	1600	1850				2050	2100		
22.0					1100	1350				1500	1550		
24.0						900				1100	1150		
26.0											750		
28.0													
30.0													
32.0													
I	0	3.9	3.9	3.9	3.9	3.9	0	0	0	0	0		
II	0	0	5.8	11.6	17.4	23.2	0	5.8	11.6	17.4	23.2		
Wire rope falls	12	8	6	4	4	3	12	6	4	4	3		
Hook													55t main hook